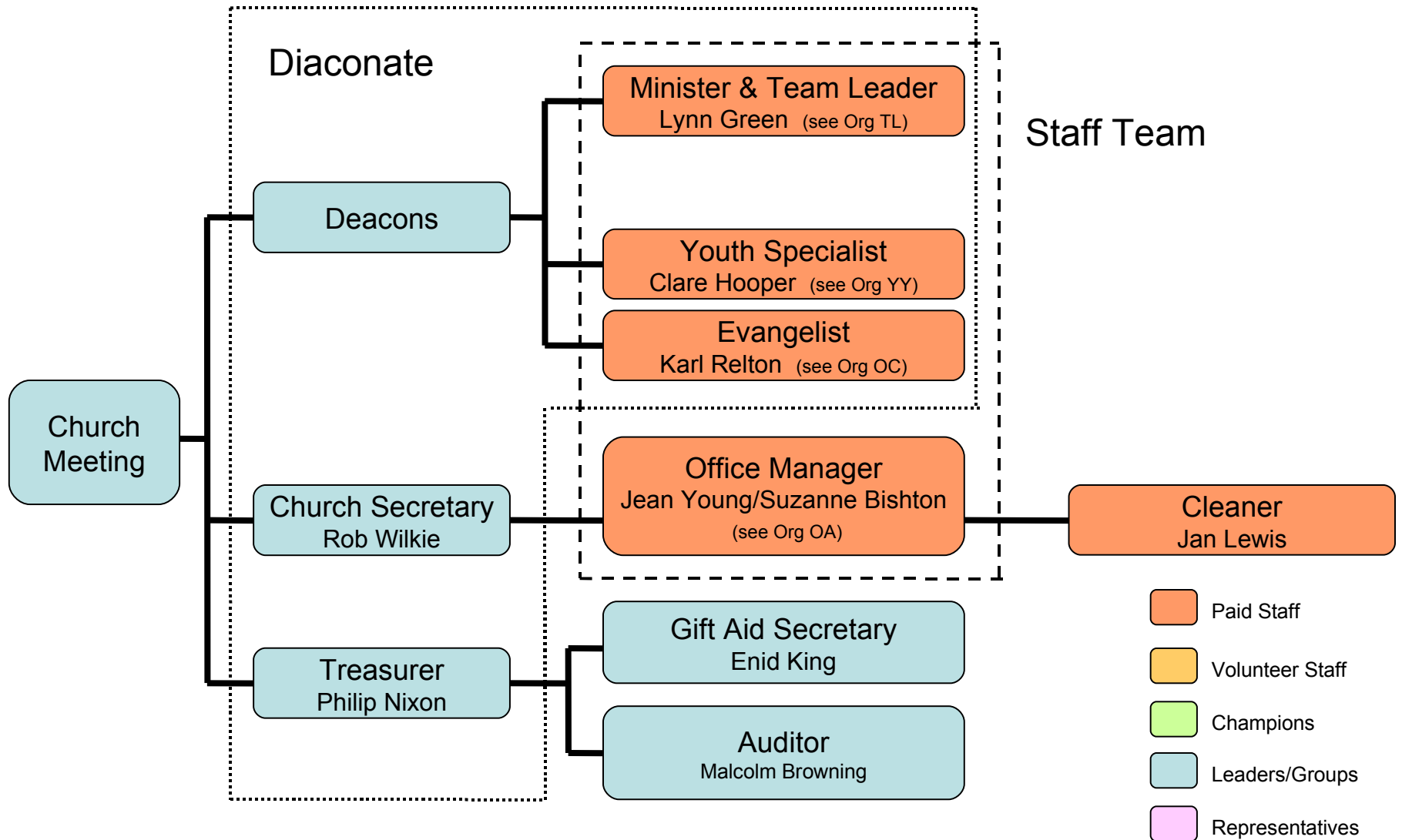


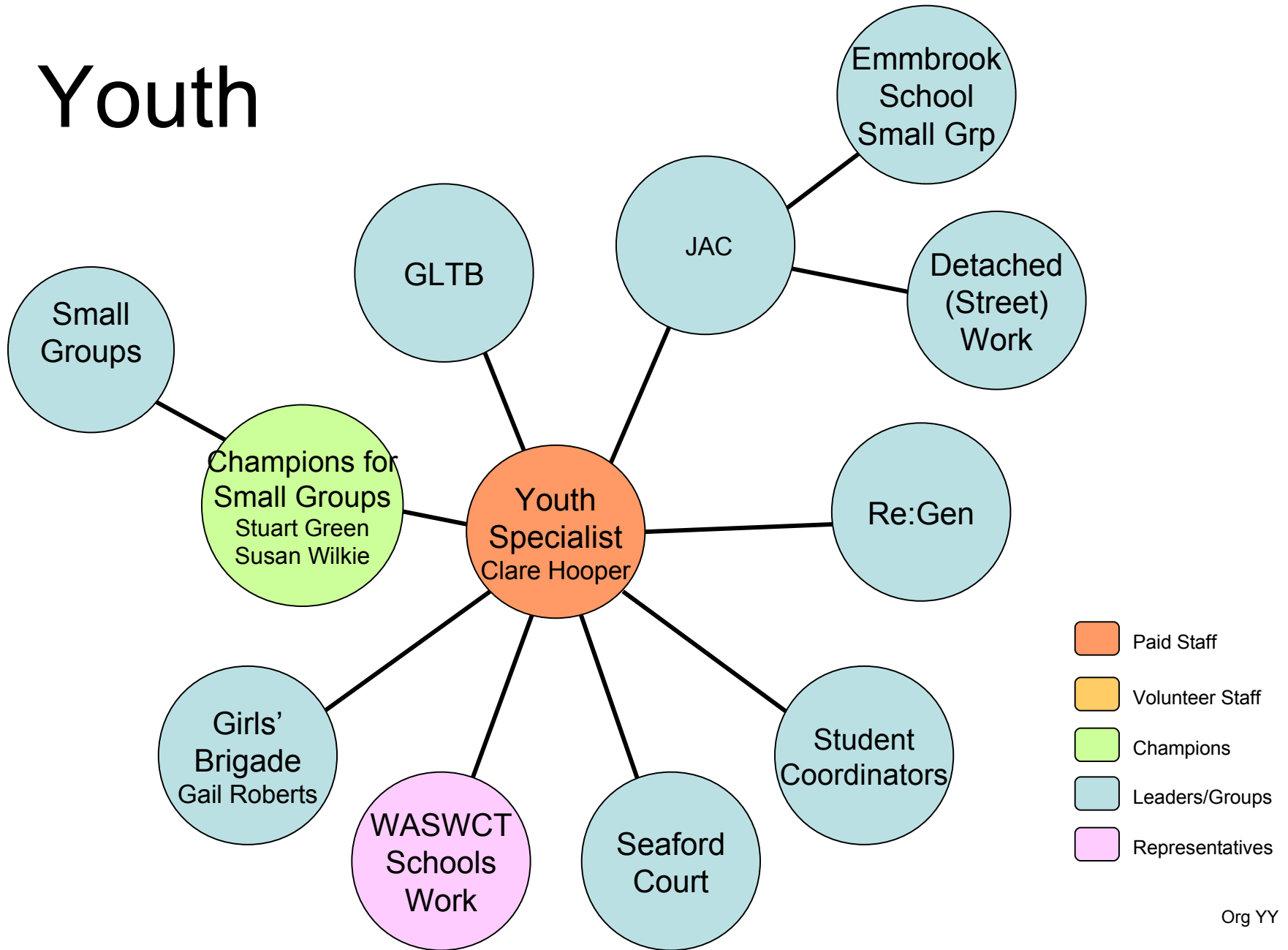
Wokingham Baptist Church



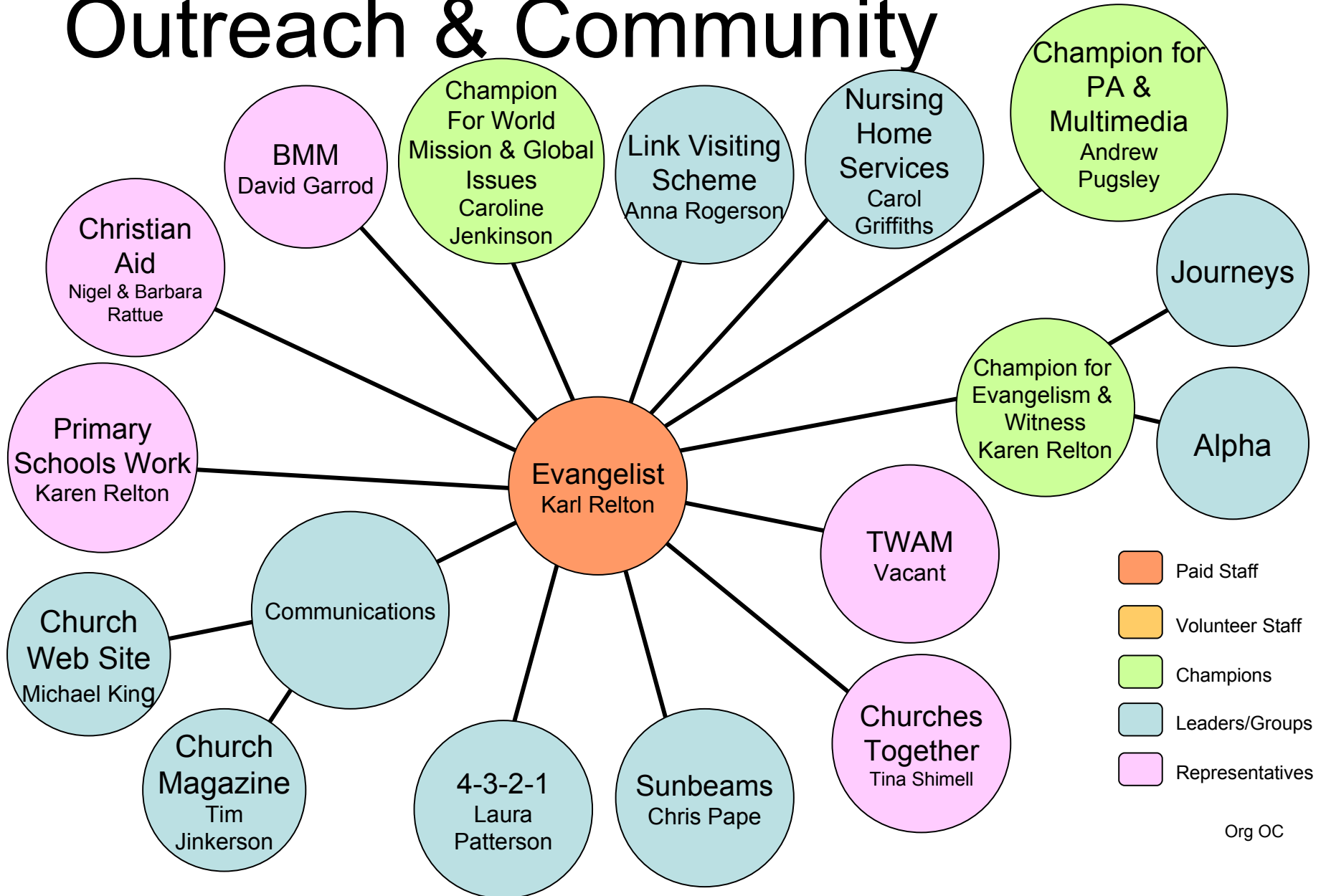
Team Leader



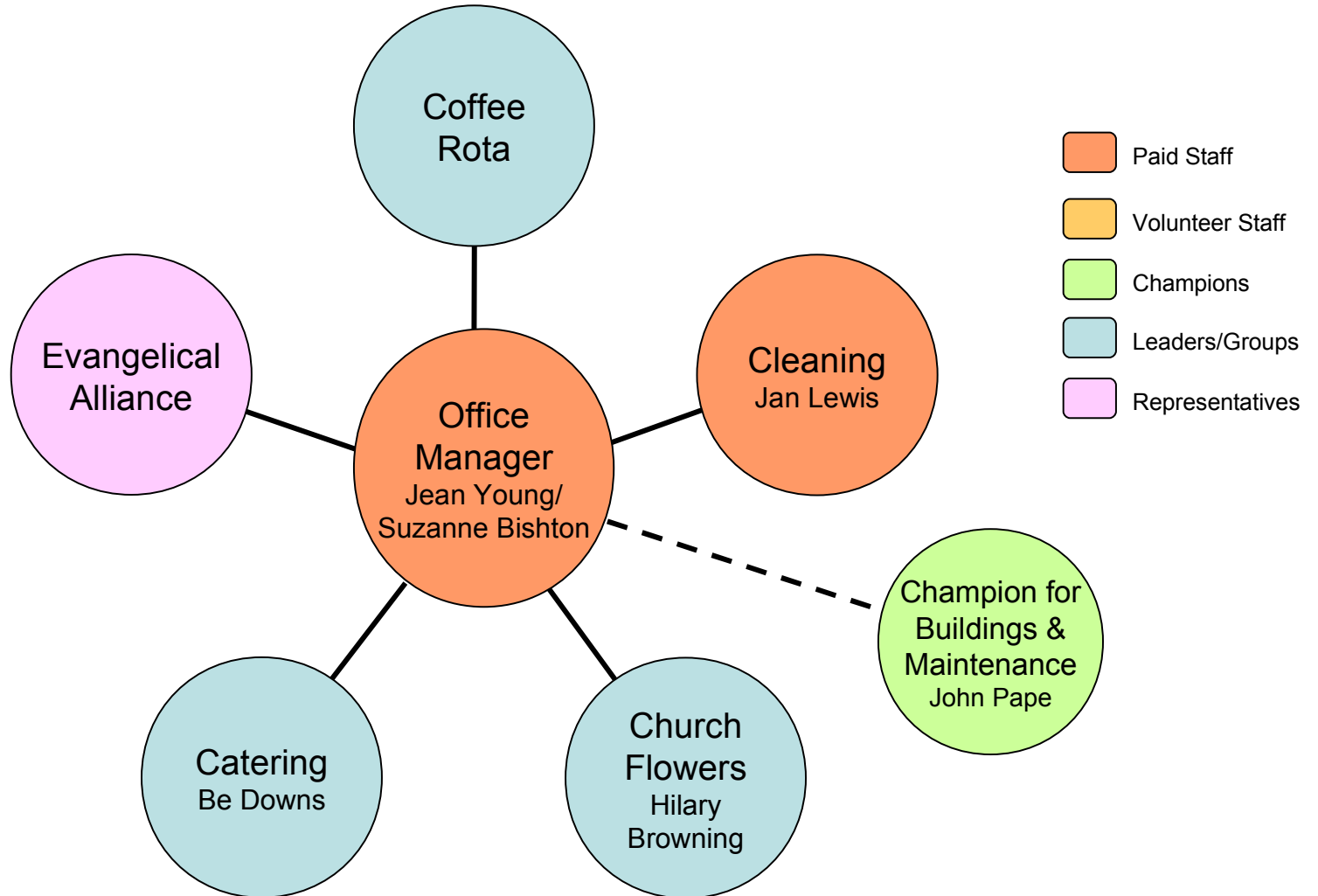
Youth



Outreach & Community



Office & Administration



Team Leader: Rev Lynn Green

Lynn has a passion for nurturing vibrant local Church where people are able to discover and experience a relationship with God in Christ, empowered by the Holy Spirit. The ways in which she embodies this passion are through:

- Encouraging prayer.
- Strategic vision.
- Nurturing gifts of leadership.
- Team working.

Lynn leads the team, oversees the pastoral care, and advocates the children's ministry. In addition she enables communication, mentors ministers and leaders, and takes part in preaching, teaching and leading worship.

Youth Specialist: Rev Clare Hooper

Clare's gifting enables her to connect with young people and those that are more on the margins. This is seen through:

- **EDUCATION:** Teaching where I can teach and learning where I can learn.
- **COMMUNITY:** Building and developing relationships to help prevent people falling through the net.
- **DISCIPLESHIP:** Helping to point people towards Jesus and God's kingdom.

Clare oversees the youth work, is chaplain for the Girls Brigade, takes part in mentoring, preaching, leading services, as well as some of the pastoral care.

Clare is also one of the responsible persons for the church [Safe to Grow](#) policy.

Outreach & Community Development: Karl Relton

Karl is passionate about reaching people both locally and globally with the reality of God's good news – encouraging all Christians to play an active role in building God's Kingdom here on earth through both words and deeds. This passion manifests through:

- Developing a culture of outreach that everyone can take part in.
- Advocating, energising and equipping outreach & community development initiatives.
- Liaising with other churches as well as other local organisations.

Karl oversees outreach activities together with the various faith discovery courses (e.g. Alpha and Journeys), as well as preaching, leading services, and mentoring.